

Fall Portraits

Jack & Jill Preschool

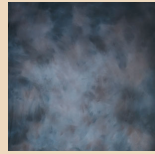


Wednesday, October 18 — Thursday, October 19

Check out this year's background offerings!



Background 1



Background 2



Background 3

Helpful tips from Sue

- When it comes to clothing, keep it simple. A long-sleeved shirt with solid colors work best. Bold stripes, large designs and polka dots stand out and tend to draw attention away from your child's face and smile.
- Dark colors like navy blue, red, green and earth tones look especially nice. Please avoid white and bright shades of yellow, orange, and pink because they can alter skin tones and are not ideal for portraits.
- Make sure your child's hair is neat and their face is clean when they arrive at school.
- For many children, this may be the first time in front of a professional camera. I will make your child feel comfortable and allow their true smile and personality to shine.
- I appreciate the opportunity to capture these moments from your child's school year at Jack and Jill!
- If for any reason you are not happy with the portraits I can offer to retake them or a full refund.

📞 508.731.6312 ✉ sue.bray@portraitsbysuebray.com 🌐 portraitsbysuebray.com

2017 Jack & Jill Portrait Packages

Package 1

(2) 8x10's
(4) 5x7's
(16) wallets
Class portrait

\$70

Package 2

(2) 8x10's
(2) 5x7's
(16) wallets
Class portrait

\$55

Package 3

(1) 8x10
(2) 5x7's
(8) wallets
Class portrait

\$40

Package 4

(2) 5x7's
(8) wallets
Class portrait

\$25

Package 5

(4) 4x6's
(8) wallets
Class portrait

\$20

A-LA-CARTE added to packages

CD with copyright

\$35

(1) 8x10's

\$15

(4) 4x6's

\$10

(2) 5x7's

\$12

(8) wallets

\$7

Class
Portrait
Only

\$10

* The class portrait is 5x7 in size and is included in packages #1-#5.

** Each sibling is \$10.00 off each package, after the first sibling.

Student's Name _____

Teacher _____ Class _____

Address _____

Phone _____

Email _____

Package(s) ordered #1 #2 #3 #4 #5 Background #1 #2 #3

A-LA-CARTE 1 8X10 2 5X7'S 8 wallets CD with copyright Class Portrait Only

Total Payment _____ Cash/Check _____ Checks payable to Susan Bray.

Orders will be delivered to the school before Thanksgiving.